



CROCHET OWL
© Annemarie Benthem





Hello!

Thank you for downloading one of my patterns. On this page I'll tell you about the materials you need to make an owl and everything else you need to know before you get started.

I made these owls with Paintbox Yarns, available at LoveCrochet. [Click here](#) to see the yarn that is available. Just pick your favourite color and use the crochet hook that is recommended.

All my patterns are in US crochet terms. I use the following abbreviations:

st: stitch
CH: chain
CH-SP: chain space
SC: single crochet
SS: slip stitch
DC: double crochet

If the pattern says: "3DC in the next..." it means you have to do 3DC all in the same next stitch.

If the pattern says: "9DC" it means you have to do 1DC in each of the next 9 stitches.

If the patterns says: "CH3" it does not count as 1DC unless it is clearly stated otherwise in the pattern.

Well, this should be a good start for your lovely owl project! Should you have any questions, don't hesitate to contact me. I'm happy to help you out if necessary. You can reach me at:

annemarieshaakblog@hotmail.com

And don't forget to check my blog: www.annemarieshaakblog.blogspot.com. There are a lot of (free) crochet patterns on my blog and every now and then I have fun giveaways.

Good luck with your project!

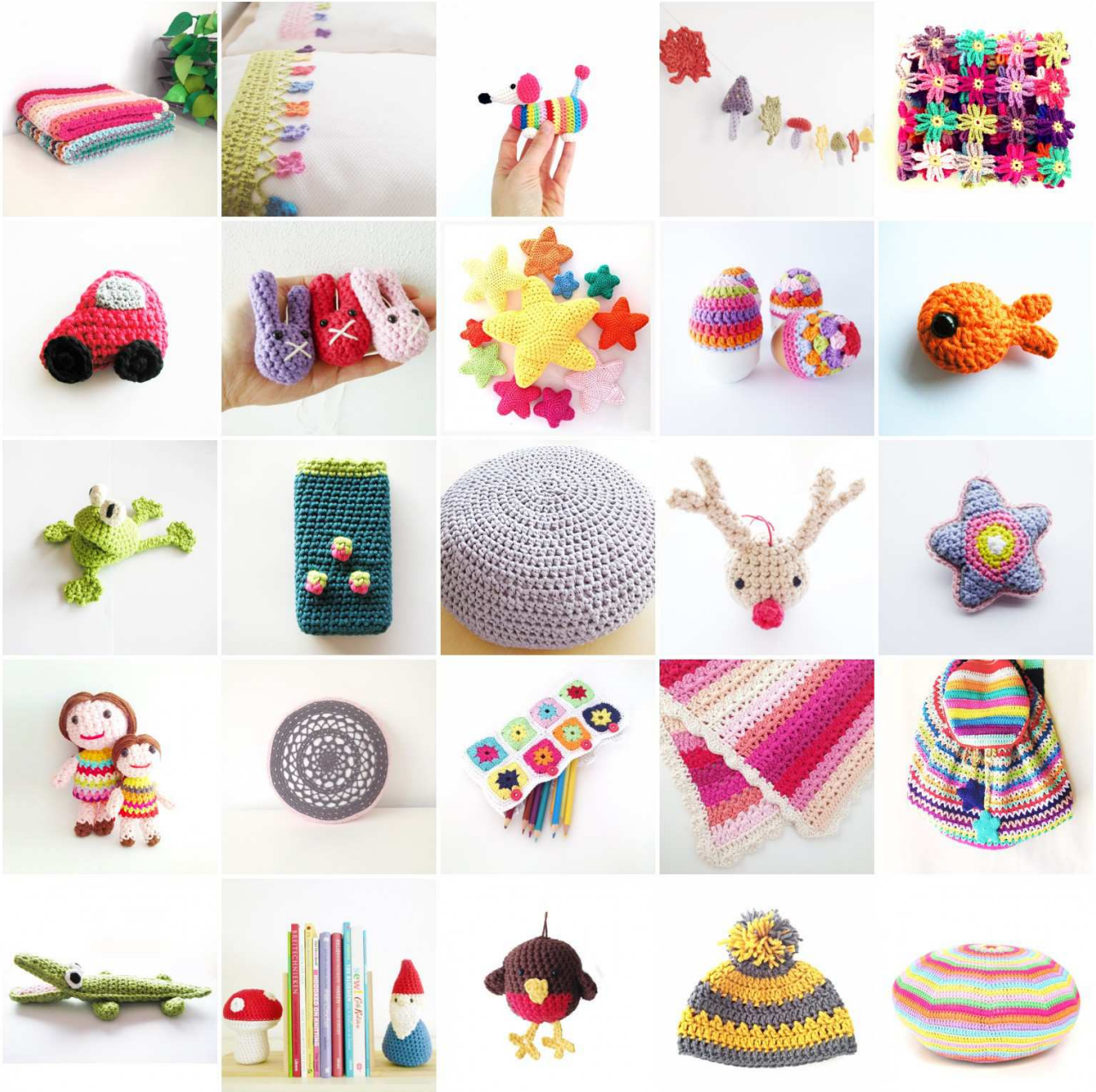
Annemarie



Here's an overview of some of my patterns that are available on www.lovecrochet.com

To go to my patterns on the LoveCrochet website, click here:

http://www.lovecrochet.com/independent-designers/?designer_name=36322





CROCHET PATTERN

Body (start with the bottom)

1. 6SC in a magic ring.
 2. Increase around. (12)
 3. * 1SC, increase. * Repeat around. (18)
 4. * 2SC, increase. * Repeat around. (24)
 - 5-8. 1SC in each stitch around. (24)
- Change colour.*
- 9-14. 1SC in each stitch around. (24) Fasten off.

Eyes (with white)

1. Make a magic ring, chain 3.
2. Do 10DC in the magic ring. Close the ring.
3. 1 slip stitch in the first DC.

Now push the safety eyes through the middle and push them through the closure that's on the inside of the body. Fill the body with fiberfill and close the top. Fold the sides of the top to shape the ears. Sew a beak on the body.

Last but not least

Designing crochet patterns is a time-consuming and difficult job. I'd love to see you make as many owls as you like. But please do not make copies of this pattern, don't distribute this pattern, don't share it and don't sell it as if it is your design. If you post your own owl somewhere on the WorldWideWeb, I'd love it if you refer to my blog or shop. Enjoy!